

**7 YEAR  
WARRANTY**

**HIGH  
EFFICIENCY**

**PLUG  
PLAY**

**THINK LUMENS NOT WATTS  
LOWER ENERGY - SAME LUMENS**

Length	Watts	lm/W	Lumens	Colour
2' (600mm)	16W / 20W / 24W / 30W	up to 180	up to 5400	3000K
				3500K
				4000K
				5000K
				5000K
4' (1200mm)	24W / 30W / 35W / 40W	up to 180	up to 7200	3000K
				3500K
				4000K
				5000K
				5000K
5' (1500mm)	36W / 45W / 55W / 60W	up to 180	up to 10800	3000K
				3500K
				4000K
				5000K
				5000K

Colour options:



Black White

**Emergency and Microwave Sensor** options available upon request  
**Contact sales office for information on 1800mm & 2400mm length options**  
**Available in 30°, 60°, 90° 120°, asymmetrical and double asymmetrical**



Luxline lens



Stellar lens



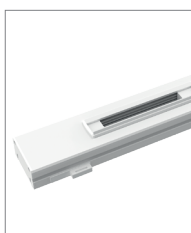
Vortex lens



Prism lens



Suspension kit



Track light module  
for 2', 4', 5'



3/5/7 Wire  
connector



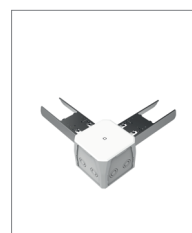
Endcap



Cross  
Connector

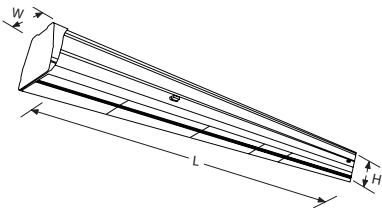


T Connector



Elbow Connector

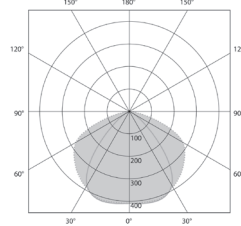
## Line Drawing



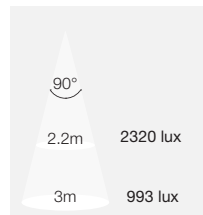
(L) Length to order  
(W) 68mm Width  
(H) 70mm Height

## Polar Curves

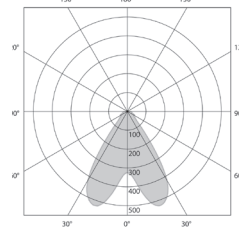
**45W 4000K 90°**



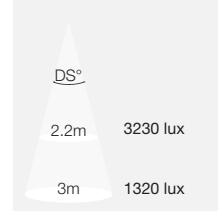
6525 Lumens



**60W 4000K**  
Double asymmetrical



10200 Lumens



## Product Features:

- Modular system incorporating a trunking rail (housing wiring harnesses) and separate clip in luminaire
- Wattage selectable
- Delivering up to 180lm/W
- Luminaire joins to create a continuous line of light - up to 70m
- Multiple lens option available
- 3 wire, 5 wire, 7 wire and 8 wire options available
- Circuit selector incorporated
- Daylight and motion sensor options available
- Flicker free
- 2kV surge protection

## Product Specification:

Installation Type	Surface or Suspended
Input Voltage	220 - 240V
Luminaire Materials	Aluminium & Polycarbonate
Lifetime	50,000
CRI	80
IK Rating	IK06
IP Rating	IP40
Warranty	7 Years

## Warranty:

This product has a warranty period of 7 Years. Warranties may be available on certain products as indicated in the product description. Warranties are valid from the date of purchase. The warranty is invalid in the case of improper use, installation, tampering, removal of the Q.C. date label or installation in an improper working environment or installation. Should this product fail during the warranty period it will be replaced free of charge, subject to the correct installation of the original product and subsequent return of the faulty unit. Aurora does not accept responsibility for any installation costs associated with the replacement of this product and Aurora reserve the right to alter.